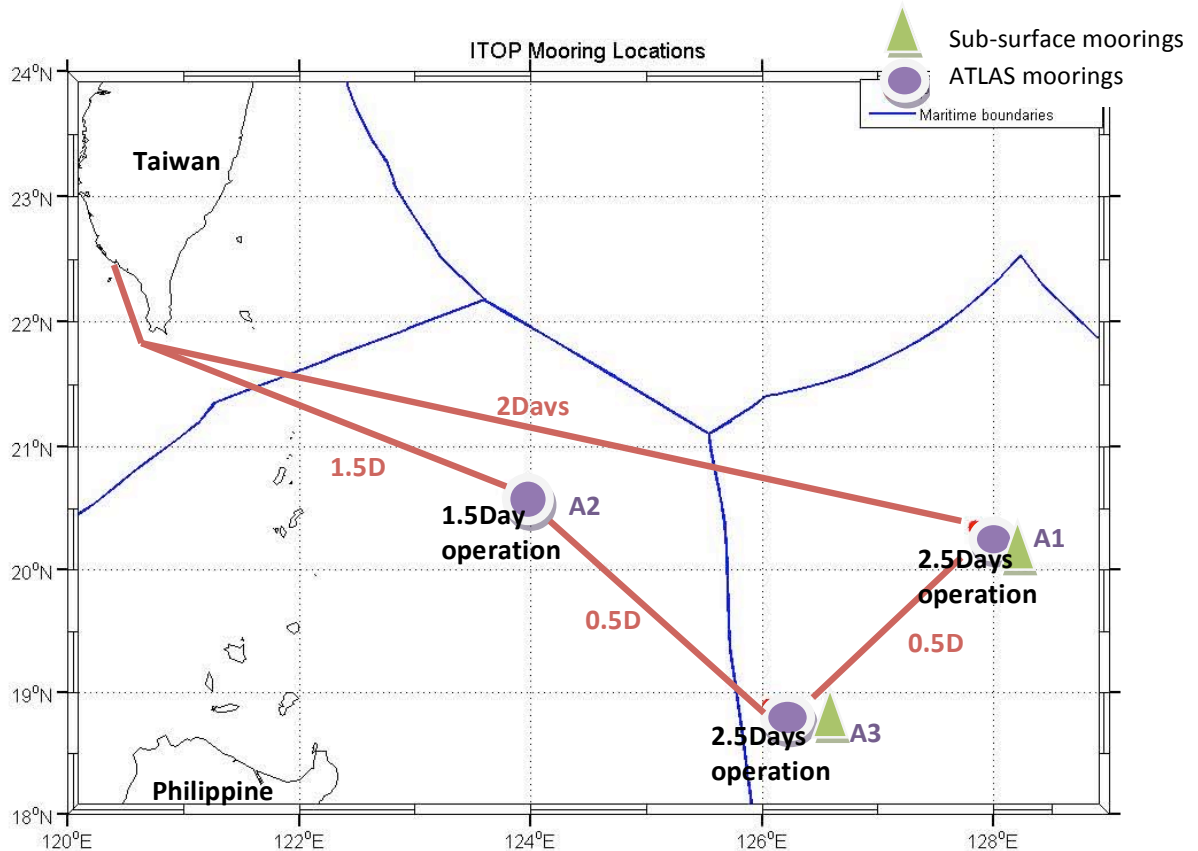


## Plan for ITOP Revelle Cruise 21 MAR - 1 APR, 2010

Date		Agenda
MAR	19-20	Loading
	21	Transit to A1
	23-25	A1: Replenish ATLAS mooring and deploy a subsurface mooring
	25	Transit to A3
	26-28	A3: Replenish ATLAS mooring and deploy a subsurface mooring
	29	Transit to A2
	30-31	A2: Deploy A2 mooring
APR	1	Arrive Kaohsiung



### 1. Mooring Diagrams

### 2. Mooring Recovery Procedure

### 3. Mooring Deployment Procedure

# 1. Mooring Diagrams

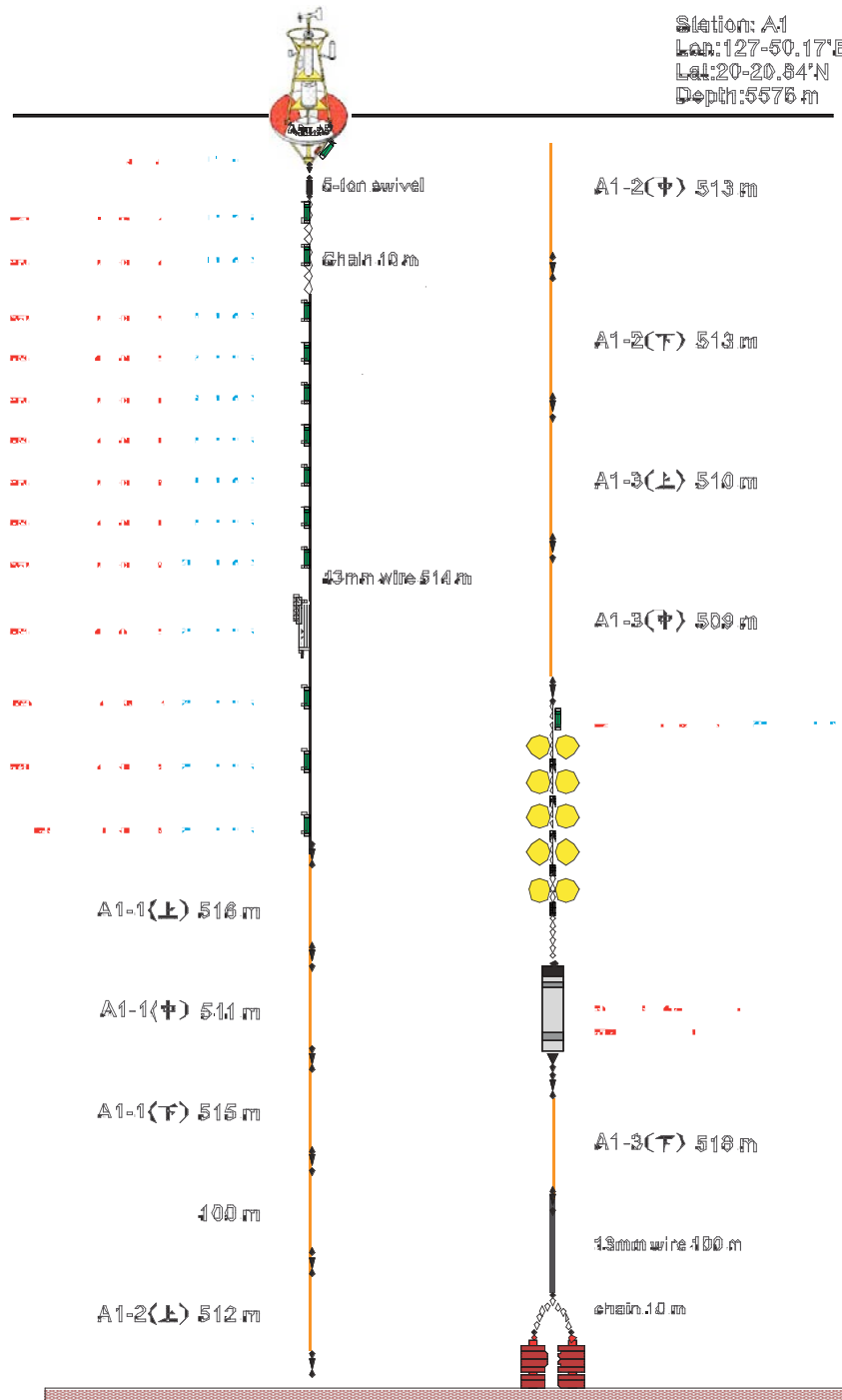
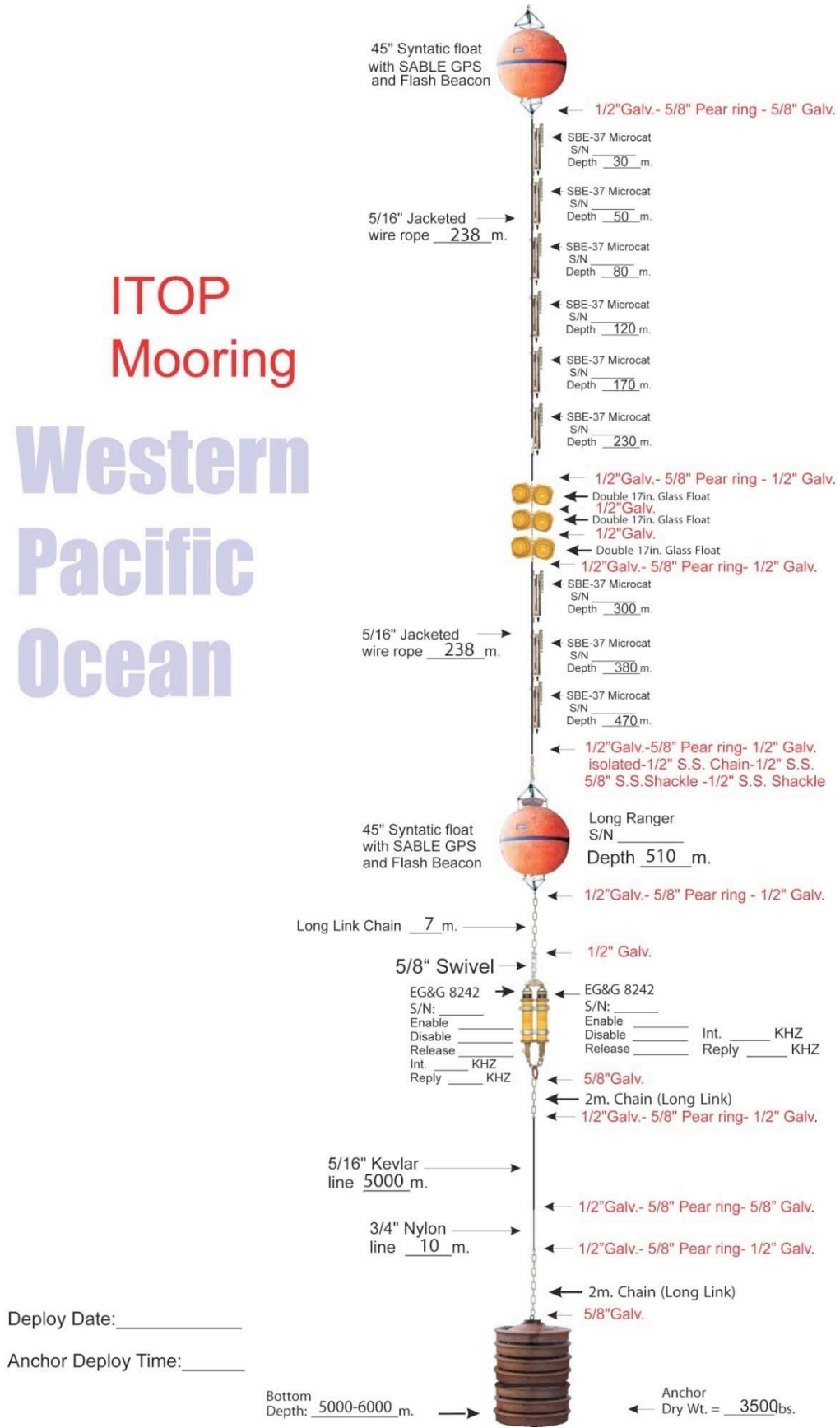


Fig 1-1. The schematic of ITOP surface mooring. Two moorings will be recovered and three moorings will be deployed during R/V Revelle MAR 21- APR 1, 2010 cruise.

# ITOP Mooring Western Pacific Ocean



**Fig 1-2. The schematic diagram of ITOP subsurface mooring. Two subsurface moorings will be deployed during R/V Revelle MAR 21- APR 1, 2010 cruise.**

## 2. ATLAS Surface Mooring Recovery Procedure



**Fig 2-1. Mooring recovery procedure - Search for buoy using radar and visual.**



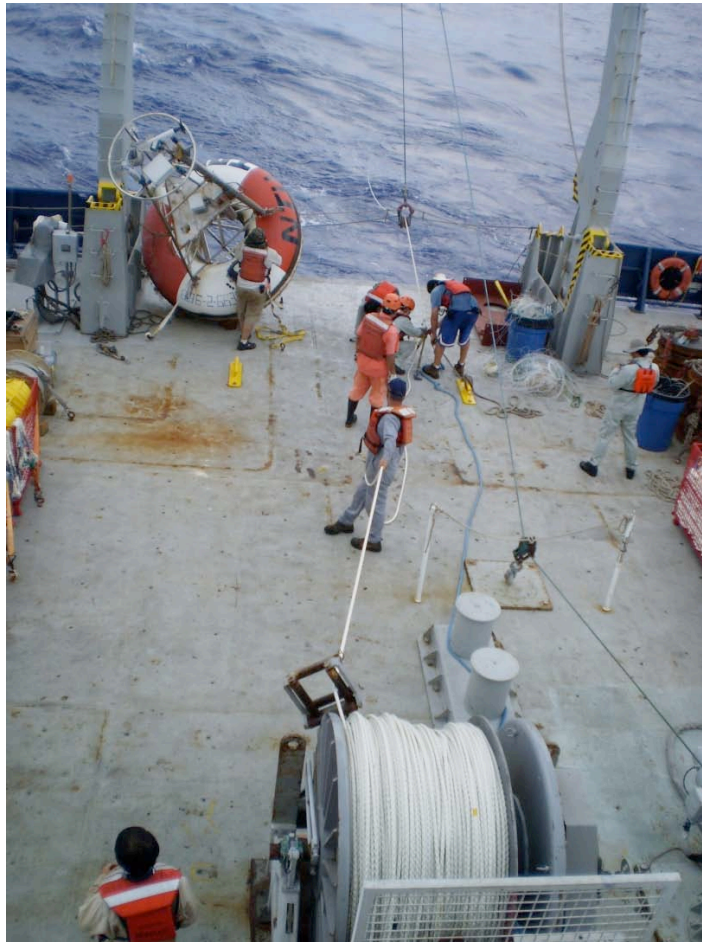
**Fig 2-2. Mooring recovery procedure - Tag guide ropes to the buoy tower.**



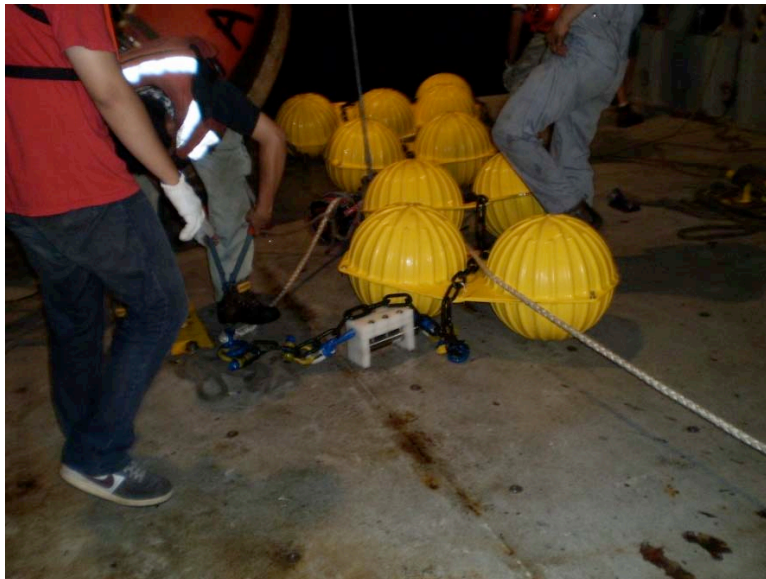
**Fig 2-3. Mooring recovery procedure - Bring buoy on board with multiple safety tags.**



**Fig 2-4. Mooring recovery procedure – Recover CTD sensors as jacketed wire reeling in.**



**Fig 2-5. Mooring recovery procedure - Recover nylon lines using TSE winch**



**Fig 2-6. Mooring recovery procedure - Recover glass floats.**

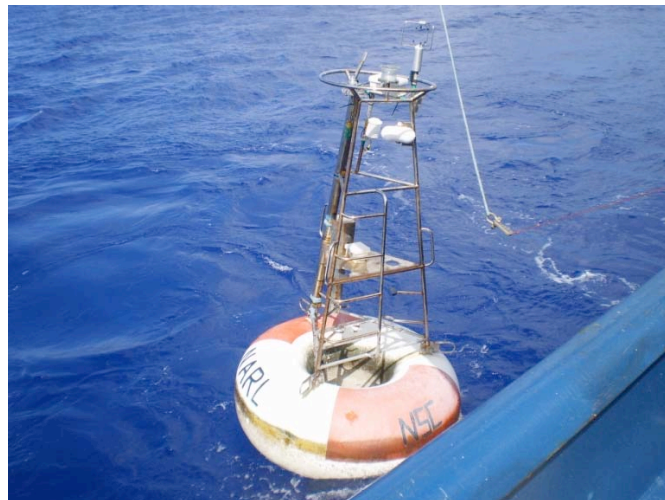


**Fig 2-7. Mooring recovery procedure - Recover acoustic release.**

### 3. ATLAS Surface Mooring Deployment Procedure



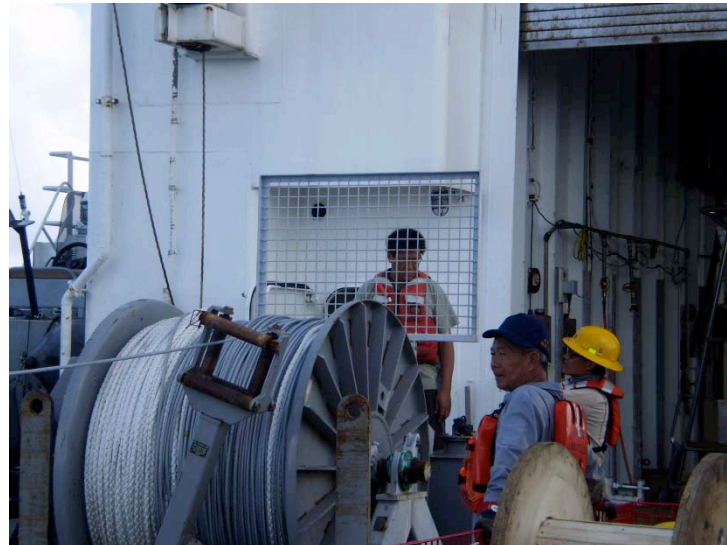
**Fig 3-1. Mooring deployment procedure - Prepare buoy for deployment.**



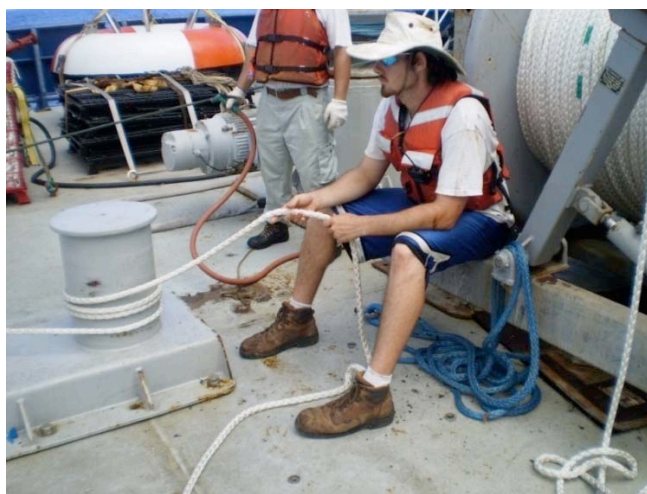
**Fig 3-2. Mooring deployment procedure - Deploy buoy using quick release.**



**Fig 3-3. Mooring deployment procedure - Attach instrument at various depths as jacketed wire paying out.**



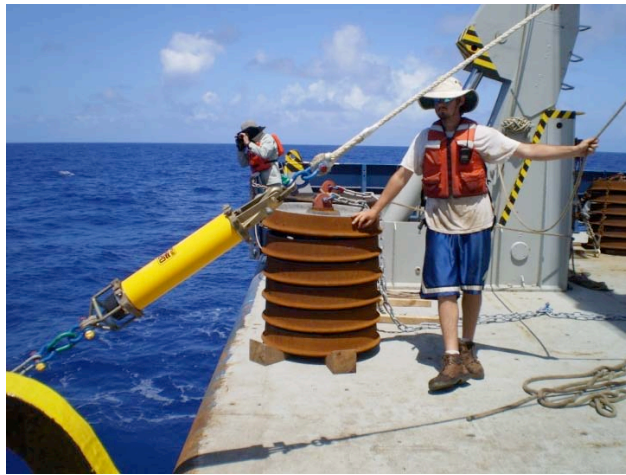
**Fig 3-4. Mooring deployment procedure - Pay out jacketed wire from TSE winch.**



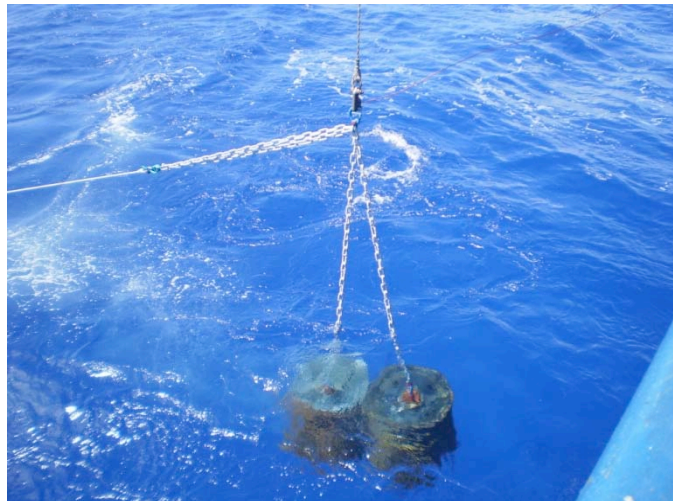
**Fig 3-5. Mooring deployment procedure - Pay out nylon line.**



**Fig 3-6. Mooring deployment procedure - Deploy glass floats.**



**Fig 3-7. Mooring deployment procedure - Deploy Acoustic release.**



**Fig 3-8. Mooring deployment procedure - Deploy anchor use quick release.**