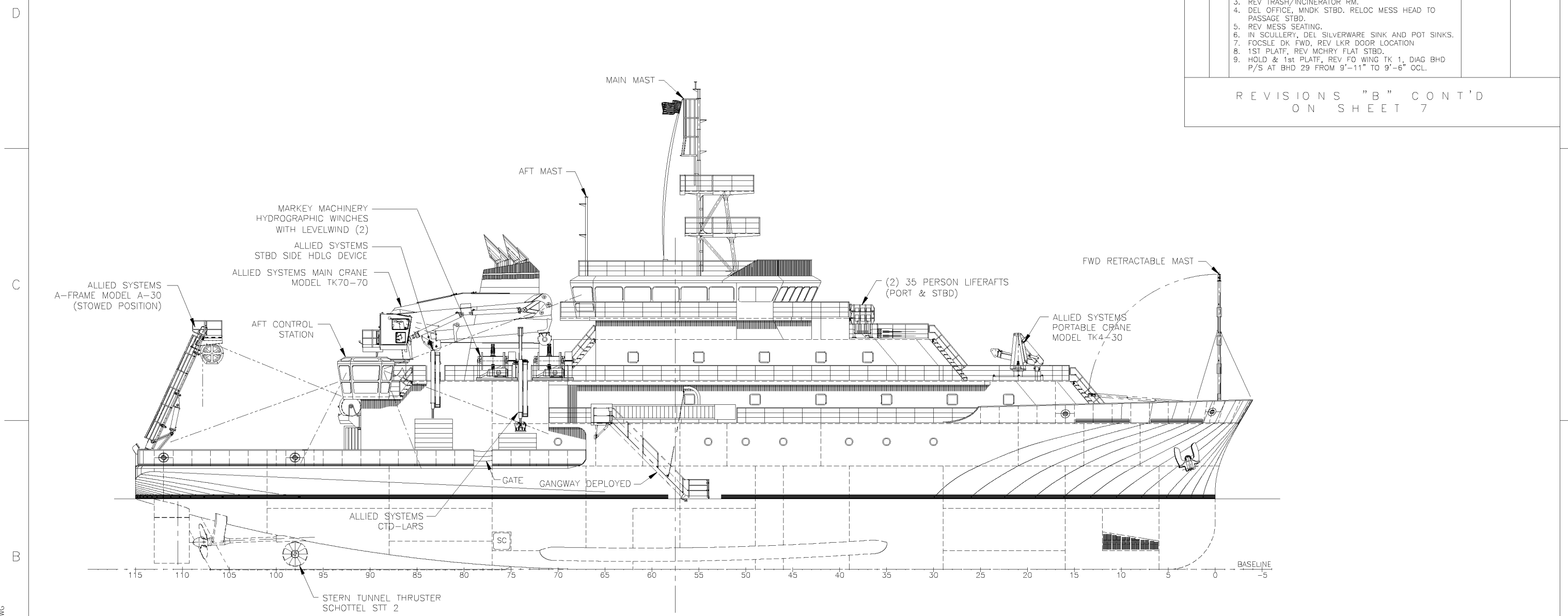


DISTRIBUTION STATEMENT A: APPROVED FOR PUBLIC RELEASE, DISTRIBUTION UNLIMITED.

REVISIONS				
ZONE	REV.	DESCRIPTION	DATE	APPROVED
ALL	A	1. REVISED COMPARTMENT NAMES TO PROVIDE UNIQUE IDENTIFIERS. 2. RELOC PHSE CONSOLES TO SUIT PANAMA CANAL. 3. RELOC COFFEE MESS TO SUIT STATUS BOARD. 4. REV TRASH/INCINERATOR RM. 5. DEL OFFICE, MNDK STBD. RELOC MESS HEAD TO PASSAGE STBD. 6. REV MESS SEATING. 7. IN SCULLERY, DEL SILVERWARE SINK AND POT SINKS. 8. FOCSE DK FWD, REV LKR DOOR LOCATION 9. 1ST PLATF, REV MCHRY FLAT STBD. 10. HOLD & 1st PLATF, REV FO WING TK 1, DIAG BHD P/S AT BHD 29 FROM 9'-11" TO 9'-6" OCL.		
REVISIONS "B" CONT'D ON SHEET 7				



BULKHEAD LEGEND	
	WATERTIGHT/A60 BHD
	NT STEEL BHD
	JOINER BHD

VESSEL CHARACTERISTICS

(APPROXIMATE)

LENGTH OVERALL	=	238'-0"
WATERLINE LENGTH	=	230'-0"
RULE LENGTH	=	220'-9.6"
MAXIMUM BREADTH (MOLDED)	=	50'-0"
DEPTH TO MNDK	=	22'-0"
DESIGN DRAFT	=	15'-0"
SCANTLING DRAFT	=	17'-0"
DESIGN SPEED	=	12 KNOTS

VESSEL CAPACITIES

(APPROXIMATE)

FUEL OIL @ 98%	=	147,066 GALS (INCL DAY TKS)
FUEL OIL DAY TANKS @ 98%	=	8,008 GALS
FUEL OIL OVERFLOW TK @ 98%	=	2,289 GALS
POTABLE WATER @ 100%	=	14,629 GALS
BALLAST @ 100%	=	116,639 GALS
ANTI-ROLL TANK @100%	=	7,917 GALS
SEWAGE HOLDING @ 98%	=	4,138 GALS
GRAY WATER TK @ 98%	=	11,955 GALS
WASTE OIL TANK @ 98%	=	5,163 GALS
OILY BILGE TANK @ 98%	=	5,494 GALS

CALL CIRCUIT LEGEND	
ENGINEER CALL CIRCUITS	
A. CHIEF ENGINEER:	ENG DAY RM
B. FIRST ASSISTANT ENG:	SR FD-15
C. SECOND ASSISTANT ENG:	SR FD-3
D. THIRD ASSISTANT ENG:	SR FD-5
BNWAS CALL CIRCUITS	
A. CAPTAIN:	CAPT DAY RM
B. CHIEF MATE:	SR FD-2
C. SECOND MATE:	SR 01-1
D. THIRD MATE:	SR 01-3

PROPULSION: DIESEL ELECTRIC

PROPULSION MOTORS: (2) SIEMENS AC MOTORS RATED FOR 876 kW EA @ 200 RPM

MAIN GENERATORS: (4) CUMMINS QSK38-DM, PRIME RATED FOR 1,044 Bkw EA @ 1800 RPM

EMERGENCY GENERATOR: (1) MTU SERIES 60, 210 kW @ 1800 RPM

BOW THRUSTER: (1) WHITE GILL 40T3S MK.V-QR, RATED FOR 686 kW @ 677 RPM

STERN THRUSTER: (1) SCHOTTEL STT 2 FP RATED FOR 620 kW @ 1470 RPM

ACCOMMODATIONS: (20) SINGLE STATEROOMS = 20 PERSONAL
(11) DOUBLE STATEROOMS = 22 PERSONAL
(1) SINGLE HOSPITAL = 1 PERSONAL
(1) DOUBLE ACCESSIBLE W/PULLMAN = 3 PERSONAL

44 PERSONS WITH SURGE CAPACITY TO 46 USING THE HOSPITAL AND THE FOLD DOWN BUNK IN THE ACCESSIBLE STATEROOM.

DWG	TITLE
	REFERENCES
	APPROVALS
USCG	
ABS	
OWNER	
HULL NO. 58	DESIGNER GUIDO PERLA & ASSOCIATES, Inc. 701 FIFTH AVENUE, SUITE 1200 SEATTLE, WA 98104 U.S.A. Tel: (206) 768-1515 Fax: (206) 768-9700 Email: gpa@gpai.com
CAGE CODE OW7U3	SHIPBUILDER DAKOTA CREEK INDUSTRIES, Inc. 820 FOURTH STREET, P.O. BOX 218 ANACORTES, WA 98221 Tel: (360) 293-9575 Fax: (360) 293-6453
NAVSEA DWG. No. 8565942	PROJECT OCEAN CLASS AGOR
ESWBS 801-01	TITLE GENERAL ARRANGEMENT PROFILE
DWN GTH DATE 04/20/10	DWG No. 65411-801-01
CKD CC DATE 04/20/10	REV. C
APVD - DATE -	SCALE 3/32" = 1'-0"
APVD - DATE -	SHEET: 1 OF 7

HALF SIZE PRINT

PLOT DATE: Tuesday, December 18, 2012
 PLOT TIME: 01:06:50 PM
 PLOT ID: PSCHEGGER/MAIER
 FILE NAME: D:\AGOR\CA_PUBLIC_RELEASE_REV_B.DWG